

■ Specifications

| | |
|-----------------------|--------------------------------------|
| Type | CD-15 |
| Field of view | 1000 x 750 μm |
| Maximum analysis area | 400 x 300 μm each (up to 4 areas) |
| Camera | CMOS |
| Illumination | Halogen Lamp |
| Moving range of stage | X: 16mm, Y: 16mm, Z: 16mm |
| Tilt | 15° |
| Input Voltage | AC100-240V, 50/60Hz |
| Power consumption | 80VA |
| Dimensions | Approximately 280(H)×215(W)×265(D)mm |
| Weight | 7.5Kg |

■ Configurations and features

| | | CellChekD | CellChekD PLUS |
|---------------------------------------|-------------------------------------------------------------------------------------------|----------------------------------------------------------------------------------------------------------------------------|----------------|
| Configurations | ✓: Included as standard | | |
| | Main Unit Type | CD-15 | |
| | Accessories | Chamber Holder, Chamber Cap, Chamber Adaptors, Vial Adaptor Set (Vial Lid, Vial Adaptor, Spacer, Holder), Micrometer, etc. | |
| | Software | CellChekD | CellChekD PLUS |
| Features | Enhance Illumination | Optionally Available * Can be upgraded together with CellChekD PLUS software. | ✓ |
| | Specular Image | ✓ | ✓ |
| | 2x Zoom Imaging | ✓ | ✓ |
| | Analysis (Center Method, Flex Center Method) | ✓ | ✓ |
| | Database function | ✓ | ✓ |
| | Built-in Pachymeter | ✓ | ✓ |
| | Real-time media temperature sensor | ✓ | ✓ |
| | Donor Enhance Image | Optionally Available * Upgradable with CellChekD PLUS software & Enhance Illumination. | ✓ |
| | Full Graft Image | Viewer Only * Recordable with CellChekD PLUS software & Enhance Illumination. | Recordable |
| Measurement Tools on Full Graft Image | Optionally Available * Upgradable with CellChekD PLUS software & Enhance Illumination. | ✓ (Diameter, Length, Area) | |

* CellChekD does not include donor enhance features. CellChekD software and hardware can be upgraded to CellChekD PLUS.

● CellChekD & CellChekD PLUS recommended computer specifications.

| | |
|---------------------|----------------------------------|
| OS: | Windows®7 Pro 32bit SP1 |
| Disk Device: | CD-ROM Drive |
| Interface: | USB2.0 or 3.0 port (4 or more) |
| CPU: | Celeron® N2930 1.83GHz or higher |
| RAM: | 4GB or higher |
| Display Resolution: | 1920 x 1080 or higher |

Specifications subject to change without notice.

Manufacturer
KONAN MEDICAL, INC.
 10-29, Miyanishicho, Nishinomiya, Hyogo 662-0976, JAPAN
 TEL 81-798-36-3455 FAX 81-798-33-0334
<http://www.konan.com/>

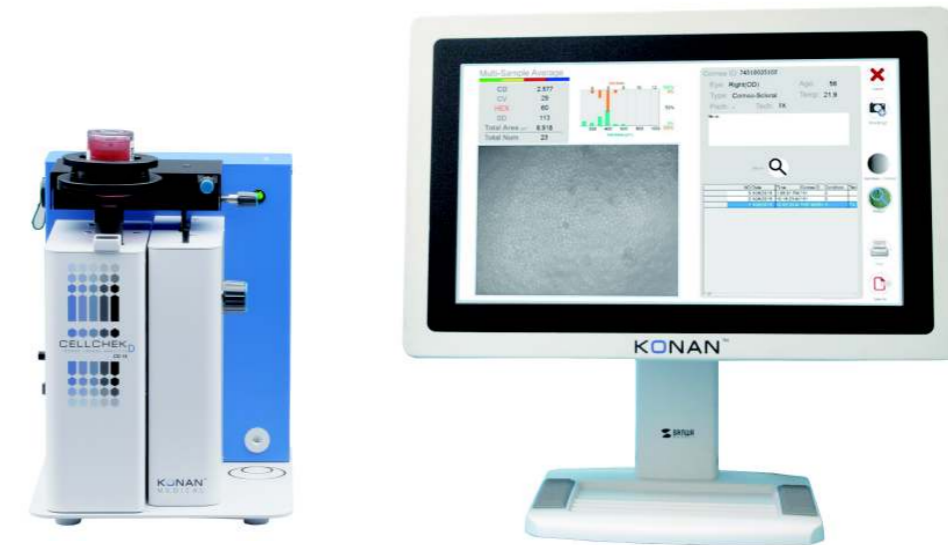
500.15.12A

KONANTM
 MEDICAL

Specular Microscope for Donor Cornea

CELLCHEK_D
 DONOR CORNEA ANALYTICS
CD-15

Ultra-wide viewing areas with superb image quality.
 New generation of specular microscopy for
 transplantable corneal material.



* Personal Computer is not included in the system.

CELLCHEK_D PLUS
 DONOR CORNEA ANALYTICS

New "Donor Enhance" Imaging System.
 Specular Microscopy +
 Enhanced Donor Tissue Imaging for
 Eye Banking : Corneal Surgeons.



Specular Microscope for Donor Cornea



Introducing the new generation of the gold standard quality imaging and assessment of transplantable corneal material.

Ultra-wide viewing areas: 1000 x 750µm [CellChekD & D PLUS]

Provides the ultra large field of view available for endothelial assessments.

Dual Camera System [CellChekD & D PLUS]

- Finder Camera for Full Graft Imaging
- Specular Camera for broad tissue area

Multi-Sample Analytic areas [CellChekD & D PLUS]

- Select up to 4 frames (400 x 300µm each)

Provides with the large multi-sample analytic areas from the ultra-large broad overview. Allows to zoom into specific areas of interest with averaged cell counts and morphology statistics.

Built-in Pachymeter [CellChekD & D PLUS]

Corneal thickness measured by visualization of endothelium to epithelium.

Real-time media temperature sensor [CellChekD & D PLUS]

User-friendly software [CellChekD & D PLUS]

Integrated database [CellChekD & D PLUS]

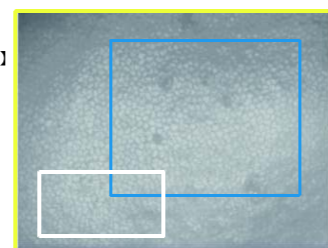
Reliable Cellular Analysis Method [CellChekD & D PLUS]

Konan provides the rich set of analytic tools for reliable assessment of the entire spectrum of corneal conditions. Both Center Method and Flex Center Method provide high precision and repeatability.

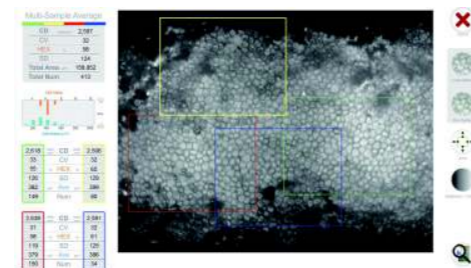
Adaptable to most of the commercially available chambers. [CellChekD & D PLUS]

Available with Bausch&Lomb®, Krolman®, Numedis®, and Stephens®.

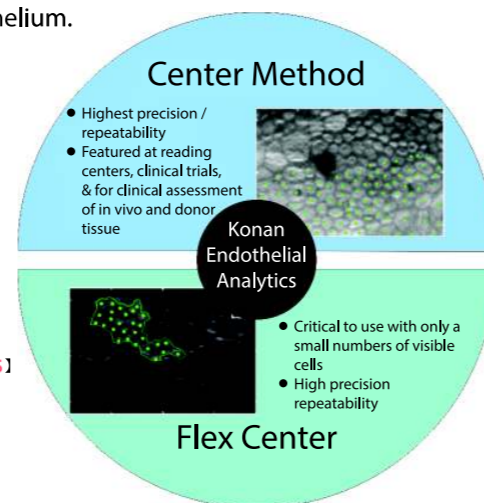
* CellChekD is upgradable to full features on Konan's CellChekD PLUS.



Yellow: CellChekD field of view sample
White & Blue: Field of view of Konan traditional models



CellChekD Analysis Screen sample



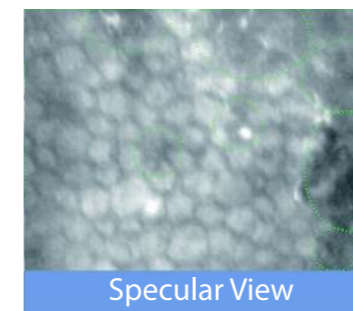
The first multi-imaging system for donor corneal analysis. CellChekD PLUS provides an amazing view into the cornea that simply has never been seen before.

In addition to CellChekD basic features, CellChekD PLUS enables following key features.

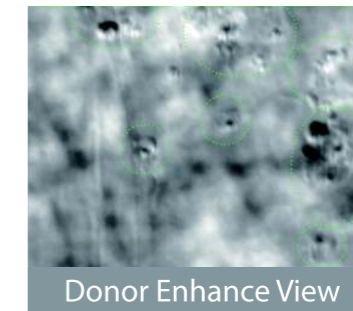
New "Donor Enhance" Imaging System [CellChekD PLUS only]

CellChekD PLUS features patent applied for "Donor Enhance" imaging system that provides remarkable views of endothelium, intra-stromal structure, and the epithelium. The range of new information from which to make better clinical decision is valuable: blood cells, fungus, rough keratome cuts, dead cells, epithelial anomalies. Never have we had this view of pre-implanted material. Corneal surgeons are finding this information to be illuminating in helping to understanding graft success and failure.

* Donor Enhance feature is available only when using a Viewing Chamber. Not available when using Vials.

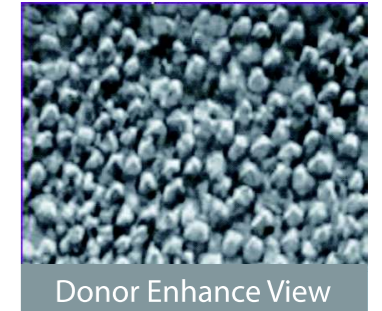


Specular View



Donor Enhance View

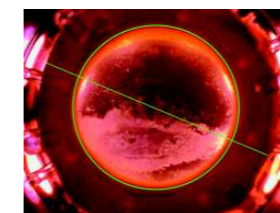
Sample image of Endothelium Specular View and the Donor Enhance View of the same area.



Donor Enhance View

Sample image of Epithelium Donor Enhance View

Full Graft Imaging & digital measurement tools [CellChekD PLUS only]



CellChekD PLUS enables to capture a total picture of the cornea. Use digital measurement tools to identify and measure the cornea diameter, and defects / scars. Actual endothelium sampling location also can be confirmed on the full graft image.

Full Graft Image & Measurements

Specular image

Donor Enhance image

CellChekD PLUS screen sample